

# SPH 85 E

NATURAL STONE HEATERS

PRODUCT-NO.: 233668

**Natural stone heaters: Cosy warmth delivered with individual charm.**

These natural stone panels not only look stunning, they also give out a very pleasant heat. Thanks to a range of different designs, the natural stone heaters fit perfectly into a wide variety of interior design concepts.

**Every model absolutely natural.**

As every panel is made from natural stone into which only a thin cable is embedded, every heater is unique in colour and structure. Consequently, a natural stone heater lends any bathroom and living room a very special and individual kind of charm.



## The main features

SPECKSTEIN natural stone heater

---

Pearl grey, velvety surface

---

850 W heating output

---

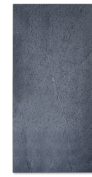
Ideal as supplementary or booster heater

---

Pleasant radiated heat

---

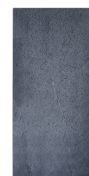
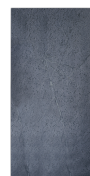
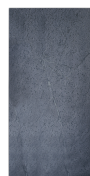
Portrait or landscape installation is possible



Type	SPH 35 E	SPH 65 E	SPH 85 E
Part no.	233666	233667	233668
Connected load	0,350 kW	0,650 kW	0,850 kW
Depth	70 mm	70 mm	70 mm
Width	600 mm	1000 mm	1000 mm
Height	400 mm	400 mm	500 mm

## Technical data

Design	Soapstone	Soapstone	Soapstone
Natural stone	Soapstone	Soapstone	Soapstone
Power supply	1/N ~ 230 V	1/N ~ 230 V	1/N ~ 230 V
Frequency	50/60 Hz	50/60 Hz	50/60 Hz
Rated current	1,5 A	2,8 A	3,7 A
Weight	21 kg	35 kg	44 kg
IP-Rating	IP66	IP66	IP66
Protection class	II	II	II



Type	SPH 115 E	SPH 145 E	SPH 165 E
Part no.	233669	233670	233671
Connected load	1,150 kW	1,450 kW	1,650 kW
Depth	70 mm	70 mm	70 mm
Width	1000 mm	1250 mm	1350 mm
Height	600 mm	600 mm	600 mm

#### Technical data

Design	Soapstone	Soapstone	Soapstone
Natural stone	Soapstone	Soapstone	Soapstone
Power supply	1/N ~ 230 V	1/N ~ 230 V	1/N ~ 230 V
Frequency	50/60 Hz	50/60 Hz	50/60 Hz
Rated current	5 A	6,3 A	7,2 A
Weight	52 kg	62 kg	70 kg
IP-Rating	IP66	IP66	IP66
Protection class	II	II	II

These appliances may only be installed and commissioned in conjunction with external room temperature controllers that have the following functions: Electronic room temperature control with day of week control and adaptive control of the start of heating. These requirements are met by the STIEBEL ELTRON RTU-TC, RTU-S UP Stiebel® and SRC C digital room temperature controllers. Failure to observe these requirements will result in the loss of the CE designation.

**Contact information**

You have questions? We appreciate to help you:

SALES HOTLINE

**+91 2067 48 0928**

SERVICE HOTLINE

**+91 2067 48 0921**

Write an email to [sales@stiebel-eltron.in](mailto:sales@stiebel-eltron.in)

**Installation information**

Please ask your local power supply utility or a registered electrician to install appliances that are not fully wired, i.e. ready to plug in. The electrician should also be able to assist you with obtaining the agreement of the respective power supply utility required for the appliance installation.