

---

# Planning Ventilation

---

## Topic

LWZ 100 Plus

**STIEBEL ELTRON**  
Technik zum Wohlfühlen

# air volume calculation.

topic: LWZ 100 Plus

## supply rooms

etage	room	floor space (m <sup>2</sup> )	room volume * (m <sup>3</sup> )	air volume (m <sup>3</sup> /h)	valve
	single bedroom	12,60	31,50	20	1
	single bedroom	7,50	18,75	20	1
	double bedroom	16,10	40,25	30	1
	living	35,90	89,75	50	2

## exhaust rooms

etage	room	floor space (m <sup>2</sup> )	room volume * (m <sup>3</sup> )	air volume (m <sup>3</sup> /h)	valve
	kitchen	12,50	31,25	60	1
	bath	7,40	18,50	60	1

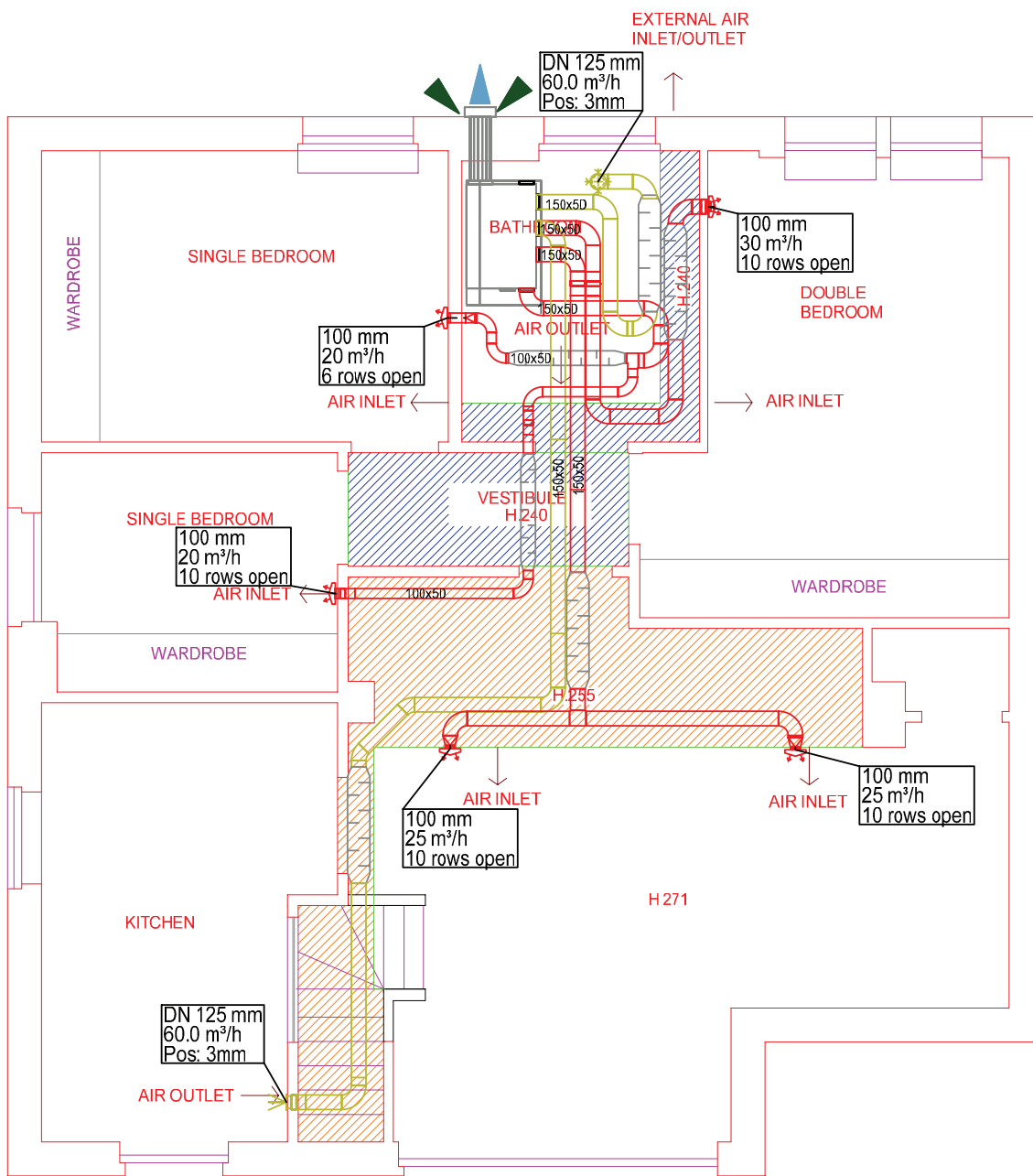
## to stream

etage	room	floor space (m <sup>2</sup> )	room volume * (m <sup>3</sup> )	air volume (m <sup>3</sup> /h)	valve
	vestibule	3,40	8,50	-	-

## building

	floor space (m <sup>2</sup> )	room volume * (m <sup>3</sup> )	air volume (m <sup>3</sup> /h)	valve
supply	72,10	180,25	120	5
exhaust	19,90	49,75	120	2
to stream	3,40	8,50	-	-
<b>building</b>	<b>95,40</b>	<b>238,50</b>	<b>160</b>	<b>7</b>

\* by ceiling height of 2,5m



	Datum	Name
Bearb.	30.06.2015	PV
Stand	30.06.2015	

Bauvorhaben	LWZ 100 Plus
-------------	--------------

Maßstab:	1 : 75
Projekt:	LWZ 100 Plus
Projektnr.:	80151090
Gerät:	LWZ 100 plus RE



Auftraggeber	
--------------	--

Zeichnung:	EG - Erdgeschoß
------------	-----------------

double bedroom  
30 m<sup>3</sup>/h

bath  
60 m<sup>3</sup>/h

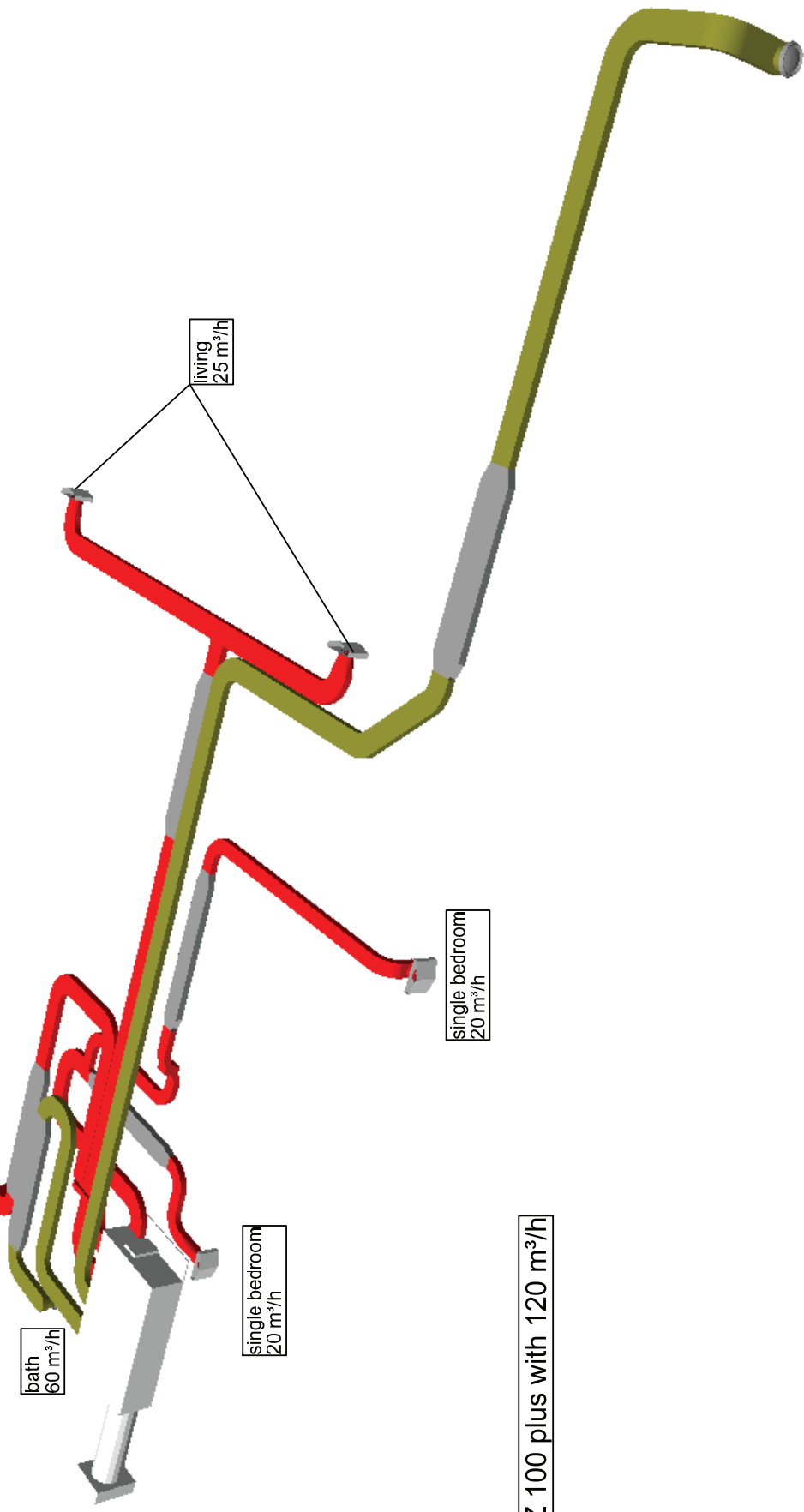
single bedroom  
20 m<sup>3</sup>/h

single bedroom  
20 m<sup>3</sup>/h

living  
25 m<sup>3</sup>/h

kitchen  
60 m<sup>3</sup>/h

LWZ 100 plus with 120 m<sup>3</sup>/h



Bearb.	29.06.2015	Name	PV
Stand	30.06.2015		

Datum		Name	

Bauvorhaben	LWZ 100 Plus
Maßstab:	LWZ 100 Plus
Projektname:	80'151090
Projektnr.:	LWZ 100 plus RE
Gerät	

Auftraggeber		Zeichnung:	3D
--------------	--	------------	----

